



## Easy 3D printing

3D printers facilitate enormously dental manufacturing and give practices as well as laboratories a greater flexibility and more efficient workflows. Dreve's complete digital workflow offers you a quick and easy access to dental 3D printing.

Software, hardware and materials are optimally matching to each other and fit to the needs of laboratories. The **Phrozen Sonic XL 4K 2022 Qualified by Dreve** with the adjusted slicer for Dreve's profiles is key of the validated process chain. Together with the FotoDent® resins, it ensures a smooth and intuitive workflow with precise printing results.



[dreve.com/phrozen](https://dreve.com/phrozen)



# The hardware

## Features



Large build volume: 200 x 125 x 200 mm



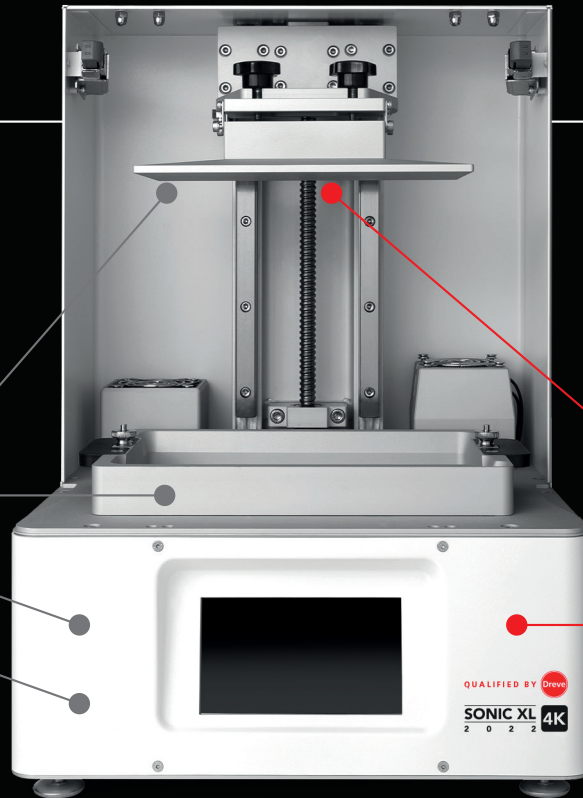
Easy exchange of components like e.g. the foil



52µm print precision thanks to 4K display



High light intensity for short construction times



## Qualified by Drevo specials



Stainless steel platform: Significantly improved adhesion characteristics

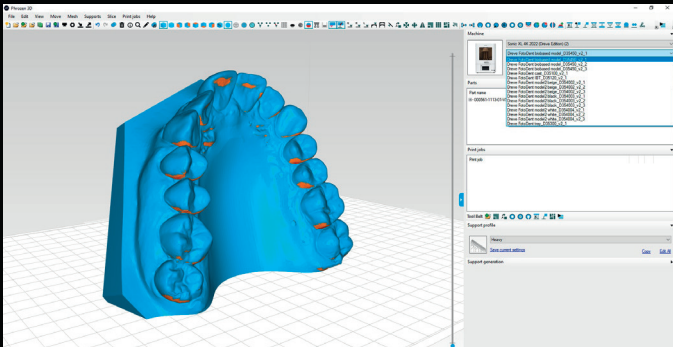


Very high quality material for longterm reproducible printing results



Device calibrated by Drevo in Unna: Defined factory settings for optimum printing results

QUALIFIED BY Drevo  
SONIC XL 4K  
2 0 2 2



## The software & profiles

The adjusted slicer for the Drewe version of the SONIC XL 4K 2022 simplifies and covers all areas, except for the actual start of the printjob itself. No additional print job settings needed. Thanks to the intuitive software, processing STL files is fast and easy even for beginners.

Starting the slicer all optimised Drewe profiles are saved and updated automatically, which guarantees a minimum need for user adjustments but a maximum security to avoid errors.

### A few clicks to reach your aims

1. Select printer
2. Select profile
3. Upload and position STL files of the parts
4. Perform the slicing process and transfer the parts to the printer
5. Start and monitor printing process by just one click on the web interface



The different profiles have been optimised for our FotoDent® materials in order to generate reproducible and precise printing results for many applications.

# The customised solution



3D printing helps to reduce costs and lead times as well as to increase productivity. All process steps of the Dreve dental 3D workflow interlock smoothly and ensure a consistently high quality.



## Slicer

Intuitive key piece



## Profiles

Precise and reproducible



## Material

Perfectly matching



## Printer

Phrozen Sonic XL 4K 2022



## Cleaning

Waterbased with FotoClean



## Post curing

Deep curing with PCU LED N<sub>2</sub>

### Slicer & Print profiles

The customised slicer for Dreve's version of the printer is key to its optimisation resulting in a turnkey solution.

Starting to print is easy due to the intuitive software. The extensively optimised print profiles for all our FotoDent® materials guarantee reproducible and precise printing results.

### Material

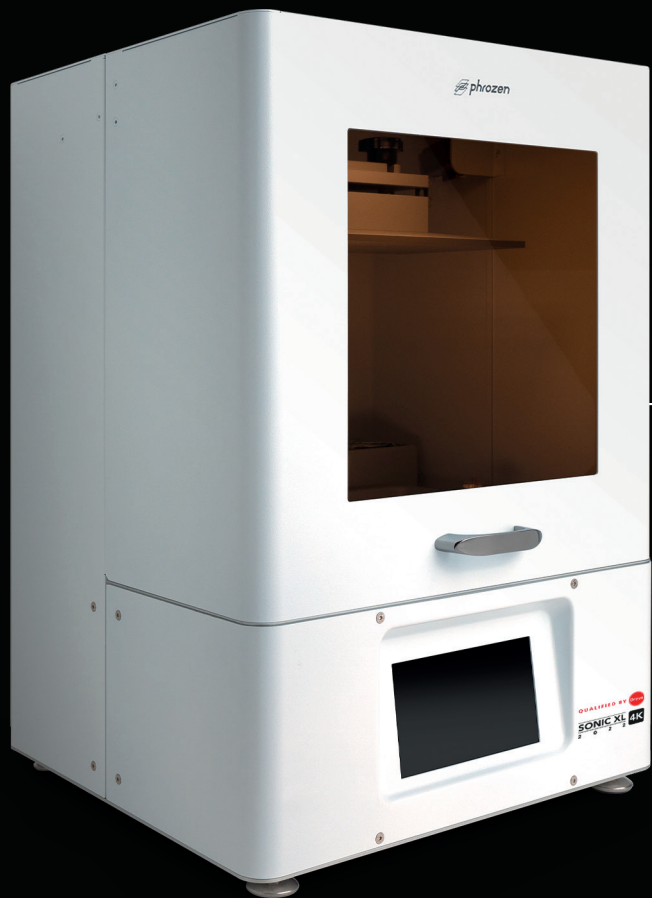
For decades, our digital dental products stand for competence and innovation in medical 3D printing. Printers, slicers and printing profiles are perfectly matched with our FotoDent® materials.

### Phrozen SONIC XL 4K 2022 Qualified by Dreve

We put every device through its paces. So the calibration in Unna with determined factory settings offers an ideal implementation. Big print volume can be achieved by the huge stainless steel build platform. Furthermore the printer offers low purchase and maintenance costs.

### Cleaning & Post curing

Before post curing our waterbased cleaning fluid FotoClean effectively removes uncured resins from the printed parts' surface. The PCU LED N<sub>2</sub> post curing unit completes a safe manufacturing process of 3D printed medical devices. Special mechanics and biocompatibility are achieved through effective deep curing. In addition it is simple to operate.



## Scope of supply

- Resin tub
- WiFi dongle
- Electric cable
- Allen key for service work
- Spatula
- Funnel
- Rubber gloves

## Drewe specials

- + Drewe stainless steel build platform
- + Drewe USB stick incl. software and useful test data
- + Drewe service card

## Contact us

You need help as soon as possible? Please contact our sales department for support in handling and operating as well as for any information about technical data. Through our sales team you can also request further professional technical support and the repair centre.

☎ Sales International +49 2303 88 07 37    ✉ [phrozen@drewe.de](mailto:phrozen@drewe.de)

